

JOIN THE CONVERSATION

#theislandbreak

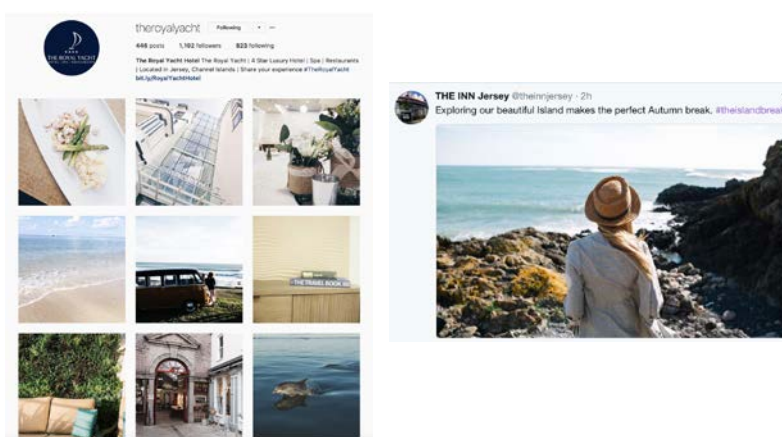


FOLLOW OUR OFFICAL CHANNELS

- Facebook @VisitJersey
- Instagram @VisitJerseyCI
- YouTube @VisitJerseyCI
- Twitter @VisitJerseyCI

SEVEN WAYS YOU CAN USE SOCIAL

1. Use our **FREE imagery/ video** content – Simply sign up to access the Media Library [here](#)



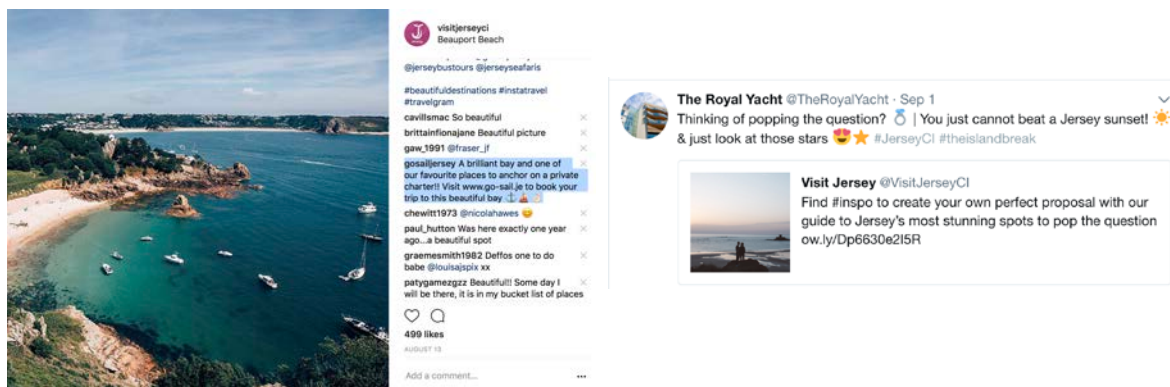
2. Use our **Guides and Features** – There are 100s available to use as inspiration for your own social plans jersey.com/guides-features



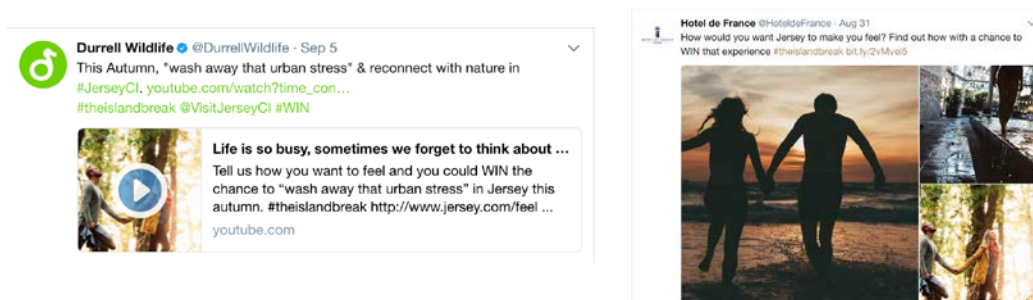
3. Use the **destination hashtag #theislandbreak** within your content

(p.s. This isn't limited to social. We need your help to Jersey known as 'The island break'. You could use this on your website, advertising and any printed material)

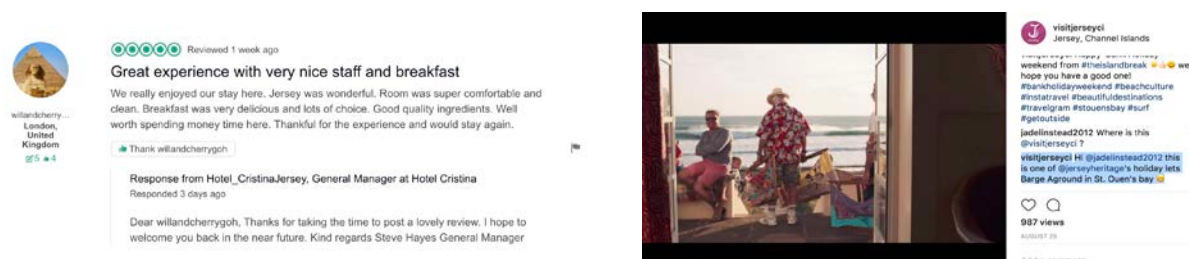
4. Tag us into your content – we can then engage with your content
5. Engage with our channels - like, retweet, quote retweet, comment or share our content.



6. Share our **campaign** messaging/ competitions/ videos with your audiences to help us reach more people and have a bigger impact as an island.



7. **Respond** to visitors - who ask questions on our channels, your channels or via travel forums e.g. TripAdvisor



Help us tell Jersey's story **#theislandbreak**